



公司概况 Company Outlines

公司名称: 住友电工电子制品(深圳)有限公司[SEPG]
Company Name: Sumitomo Electric Interconnect Products(Shenzhen)Ltd. [SEPG]
资本金: 9710万美金
Capital: US\$ 97.1 million
经营范围: 生产电源线、软线路板、电子软排线、电子线、双面挠性印制电路板、多层挠性板、PS吸塑盒、环氧树脂支架、模具/治具、设备周边连接线、ABS电子配线、贴纸、聚酰亚胺补强板、玻纤板,销售自产产品并提供售后服务和关联公司的技术咨询;从事上述产品及相关产品、模具、治工具的批发、佣金代理(拍卖除外)、进出口及相关配套服务(不涉及国营贸易管理商品,涉及配额、许可证管理及其它专项规定管理的商品,按国家有关规定办理申请)
Products & Services: Manufacture of electric cords, flexible printed circuits (FPC), flexible flat cables, electronic wires, double-sided FPC, multi-layer FPC, PS trays, epoxy resin brackets, moulds / jigs, harnesses for electronic devices, ABS harnesses, sealing tapes, polyimide supporting tapes and glass epoxy boards, sales and after service for own products, technical consulting for group companies; wholesale trade of own products, those relevant products, molds and jigs, distribution (except auctions), foreign trades and its related services (except trading goods under state operated, include dealing of quota, licenses and other goods controlled under the specific regulations, those shall be certified under the related states regulations).
出资者: 住友电工香港电子线制品有限公司 100%
Share: Sumitomo Electric Interconnect Products (Hong Kong) Ltd. [SEPH]100%
设立: 2010年4月
Established: April, 2010
规模: 占地面积:46,811平方米, 工厂面积:62,900平方米
Area: Land: 46,811m² Factory:62,900m²
人员: 9,900(截止到2016年6月)
Employees: 9,900 (Jun., 2016)
 ※ ISO9001,ISO14001,OHSAS18001,ISO13485已先后获证(1998年,2005年,2007年,2010年)

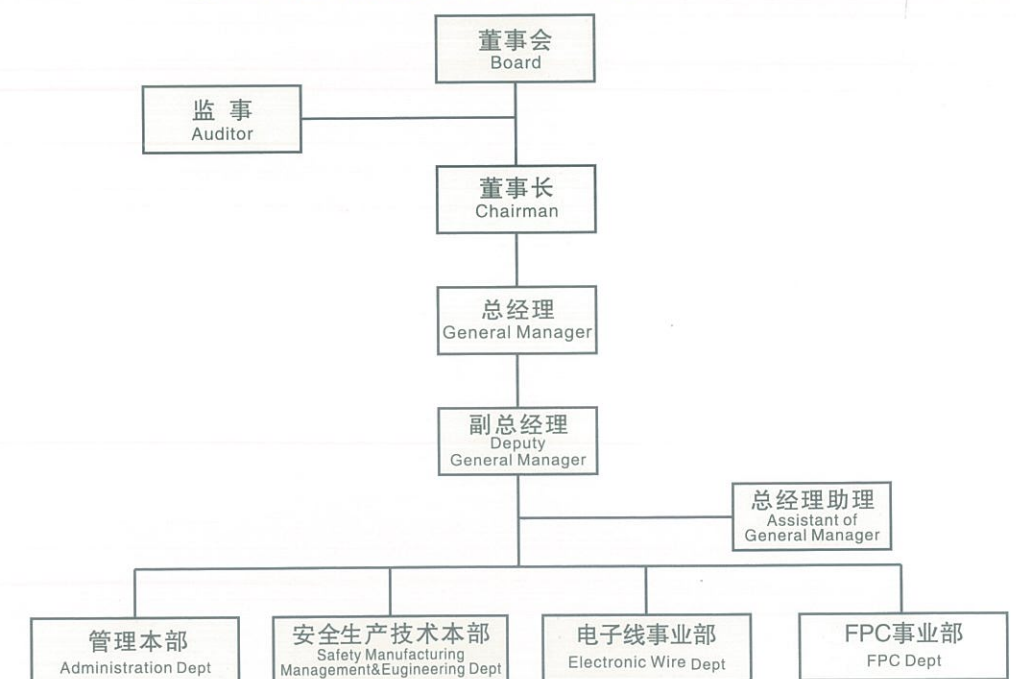
•SEPG的经营理念

满足顾客要求,提供最优质的产品和服务。
 创新技术,促进变革,不断努力,持之以恒。
 承担社会责任,为创建更加美好的社会和环境做出贡献。
 坚持高度企业伦理,成为客户信得过的企业。
 使实现自我成为可能,培养生机勃勃的企业文化氛围。

•Company Principles

Offer the very best goods and services to satisfy customer needs.
 Build technical expertise, realize changes and strive for consistent growth.
 Contribute to creating a better society and environment, with a firm awareness of our social responsibility.
 Maintain high corporate ethics and strive to become a company worthy of society's trust.
 Nurture a lively corporate culture that enables employee self-improvement.

公司组织图概要 Organization Chart



公司体系证书 (ISO9001,ISO14001,OHSAS18001,ISO13485)



FPC产品概要 Outline of FPC products

软线路板 Flexible Printed Circuits (FPC)

FPC是在超薄绝缘薄膜上使用铜箔形成电路的配线材料，它为电子产品的轻量化，小型化和低成本化做出了巨大贡献，不仅在电脑硬盘上而且在家用摄像机以及手机等产品中被广泛应用。住友电工已建立从回路设计到零部件加工的高效可行的生产体系，我们承诺为您提供高信赖的产品。

FPC is manufactured by forming copper circuitry on an ultra-thin insulator film. It greatly contributes to the downsizing, weight saving, and cost reduction of electronic devices, and is used in hard disc drives as well as in such products as camera-integrated video recorders and mobile phones. SEI has established efficient and capable production systems from circuit design to high technology component assembly, allowing for highly reliable product supply.

FPC应用 FPC applications

	手机 Mobile Phone	
	硬盘驱动器 Hard Disk Drive	
	数码相机 Digital Camera	
	掌上电脑 Personal Digital Assistant	
	电子书 E-Book	
	车载DVD Car DVD	

FFC产品概要 Outline of FFC products

电子软排线 Flexible Flat Cables(FFC)

FFC继承了住友电工几十年来在高质量，UL认可产品的发展，能够满足日本、美国等多个国家用户对高质量产品的需求。FFC作为内部连接线而用于紧凑、轻量而高效的电子产品中，现广泛的应用于VCD、DVD、CD-ROM，打印机、扫描仪等产品中。

FFC inherits the success of decades of development at SEI in the manufacture of high quality and UL-approved products, which satisfy the highest quality requirements of users in Japan, US and other countries. FFC are found as internal wiring in electronic devices for which compactness, lightweight and high performance. Commonly used in VCD, DVD, CD-RW, CD-ROM, Printers, Scanners and so on.

FFC应用 FFC applications

	高速FFC用于电视机、复印机、汽车音响和视频游戏机 High speed FFC for TV Set, Copy Machine, Car Audio & Video Game	 
	镀金FFC用于DVC, FPD&DVD Gold plated FFC (HF) for DVC, FPD & DVD	 
	防锡结晶FFC用于数码相机、打印机和DVD Anti-Whisker FFC for Digital Camera, Printer & DVD	 

CBA产品概要 Outline of CBA products

电子线 Cable Assembly(CBA)

CBA 制造高品质连接线来满足对于稳定而高速的特性电子产品的需求的用户。住友电工一直致力于小型化、快速和更加柔软化材料的创新，目前制造的产品被广泛用于LCD监控器、笔记本电脑、ABS连接线、医疗设备等。

CBA is high-quality interface cable for users who demand stable electronic and high speed characteristics. SEI innovates in the direction of smaller, faster and more flexible materials, and provides perfect cable solutions for mobile phones, LCD monitors, laptop, ABS assy and Medical Equipments.

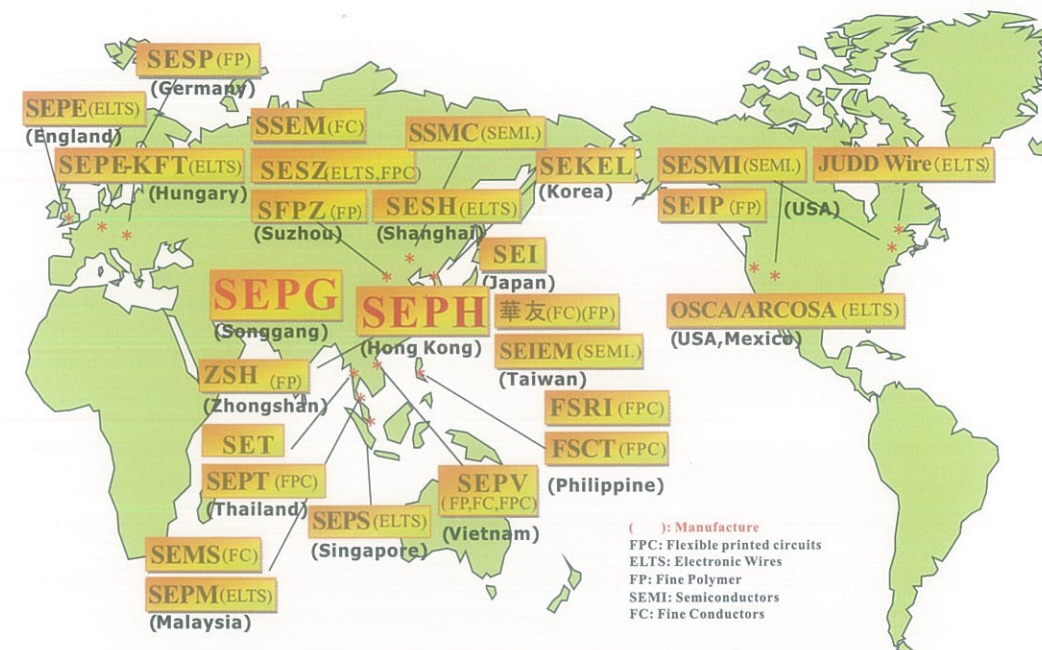
CBA应用 CBA applications

医疗设备线 Medical Cable

移动通信设备 Mobile Communications Equipment

汽车线束组装 Automotive Wiring Harness

住友电工电子事业部全球网络 Global Network



SEPG地图



参考路线: Reference line

- 从深圳机场或福永码头至住友电工电子制品(深圳)有限公司路线
 宝安机场→京港澳高速公路(G4)→新桥出口→G107国道→塘下涌立交→广田路→塘下涌工业大道→松塘路→住友电工
- Shenzhen Airport or Fuyong Quay to SEPG
 Shenzhen Airport → Beijing-HK-Macau Freeway → Xinqiao Exit → G107 State Highway → Tangxiachong Overpass → Guangtian Road → Tangxiachong Industry Road → Songtang Road → SEPG
- 从广州机场至住友电工电子制品(深圳)有限公司路线
 广州机场→机场高速→蚌湖出口→沈海高速(G15)→长安出口→S358国道→涌头互通立交→G107国道→塘下涌立交→广田路→塘下涌工业大道→松塘路→住友电工
- Guangzhou Airport to SEPG
 Guangzhou Airport → Airport Freeway → Banghu Exit → Shenhai Freeway(G15) → Changan Exit → S358 State Highway → Yongtuo Overpass → G107 State Highway → Tangxiachong Overpass → Guangtian Road → Tangxiachong Industry Road → Songtang Road → SEPG